

How do sales, contracts, and agreements associated with the CFLRP affect local communities?



A local sawmill within the project landscape (left), stacked logs from a thinning treatment within the project area (right).

Intended monitoring:

- Run local data through the Washington office Treatment for Restoration Economic Analysis Toolkit (TREAT) model.
- Record the number of full time jobs, part time jobs, and number of employees reported by partner surveys.
- Record the ratio of FTE to employees reported by partner surveys.
- Record the percentage of wages paid reported by partner surveys.
- Record the percentage of contracts awarded locally reported by partner surveys and USAspending.gov reports.
- Record the number of contracts awarded to HUB businesses through the SBA program.
- Record qualitative information about contracts awarded locally vs. outsourced reported by partner surveys
- Record the percent in number of trainings and the variety of type of trainings reported by partner surveys.

Completed monitoring:

- Local project data was collected through key informant interviews as well as USFS databases and entered into the TREAT model generating local impact results.
- Key informant interviews were conducted, collecting data on non-federal contract jobs and employment.
- Key informant interviews were conducted, collecting data on the ratio of full time equivalent employees.
- Key informant interviews were conducted, only some respondents recorded wages paid.
- Key informant interviews were conducted alongside federal data gathered from USAspending reports, collecting data on contracts.
- The number of contracts awarded to HUB businesses was pulled from SBA program data.
- Local contract data was collected through the TREAT database and key informant interviews.
- Training opportunities were recorded through the 2-3-2 Rio Chama quarterly reports.

2-3-2 Cohesive Strategy Partnership Multiparty Monitoring Update

for the Rio Chama Collaborative Forest Landscape Restoration Program



Overview of results:

Local contract capture (data from TREAT model):

Local contract capture (% of sales, contracts, agreements captured by local entities vs leakage outside local area) (from TREAT):

- Of the \$3,095,898 of CFLN funds spent in FY 23, 76% was captured by local entities.
- Of the \$11,099,804 in Forest Service and partner investments in the project landscape, 72% was captured by local entities.

Contract recipients by category:

Recipients (text from reported categories)	Contracts (Total amount obligated)	Contracts (% of total amount of CFLRP funding obligated)
Woman Owned Business	\$410,451	20%
Woman Owned Small Business	\$410,451	20%
Economically Disadvantaged Women Owned Small Business	\$223,736	11%
Minority Owned Business	\$1,121,111	56%
Hispanic American Owned Business	\$1,084,090	54%
Self-Certified Small Disadvantaged Business	\$410,451	20%
C8a Program Participant	\$223,736	11%
Historically Underutilized Business Zone	\$223,736	11%

Note: C8a stands for Certified SBA A8 Program (small businesses)

Jobs supported and maintained by treatment component type (Key Informant Interviews and TREAT)

Component	Jobs Supported	Jobs Maintained	CFLRP Funding	Matching Funding
Timber harvesting component	122	168	\$6,439,529	\$8,656,470
Forest and watershed restoration component	80	116	\$3,754,332	\$5,681,859
Mill processing component	104	215	\$3,869,906	\$8,316,290
Implementation and monitoring	22	26	\$900,839	\$1,032,405
Other Project Activities	4	6	\$176,476	\$301,262
Totals:	331	531	\$15,141,082	\$23,988,285



Forest Stewards Guild Youth Corp (FSYC) training.

Notes from the field:

The Treatment for Restoration Economic Analysis Toolkit (TREAT) model was developed by the Forest Service as a way to consolidate data and understand the economic impact of CFLRP treatments. All economic data collected through key informant interviews was also entered into the TREAT database to feed the economic model. Based on the TREAT economic model, the All Lands work of the CFLRP will contribute an estimated ~\$23 million in labor income and 531 Full-time jobs from CFLN and leveraged funding in the landscape across the Rio Chama AOI.

Although we may not see the effects of fiscal year 2023 investment in local communities, we know that these wages and full-time jobs have an important impact on the social and economic conditions of small, rural economies through first-hand accounts of project partners working across the Rio Chama CFLRP landscape. The reporting and impact analysis process will continually adapt to meet local community engagement and reporting needs.

Concentration of low income populations, data from 2020 (figure created by GTAC).

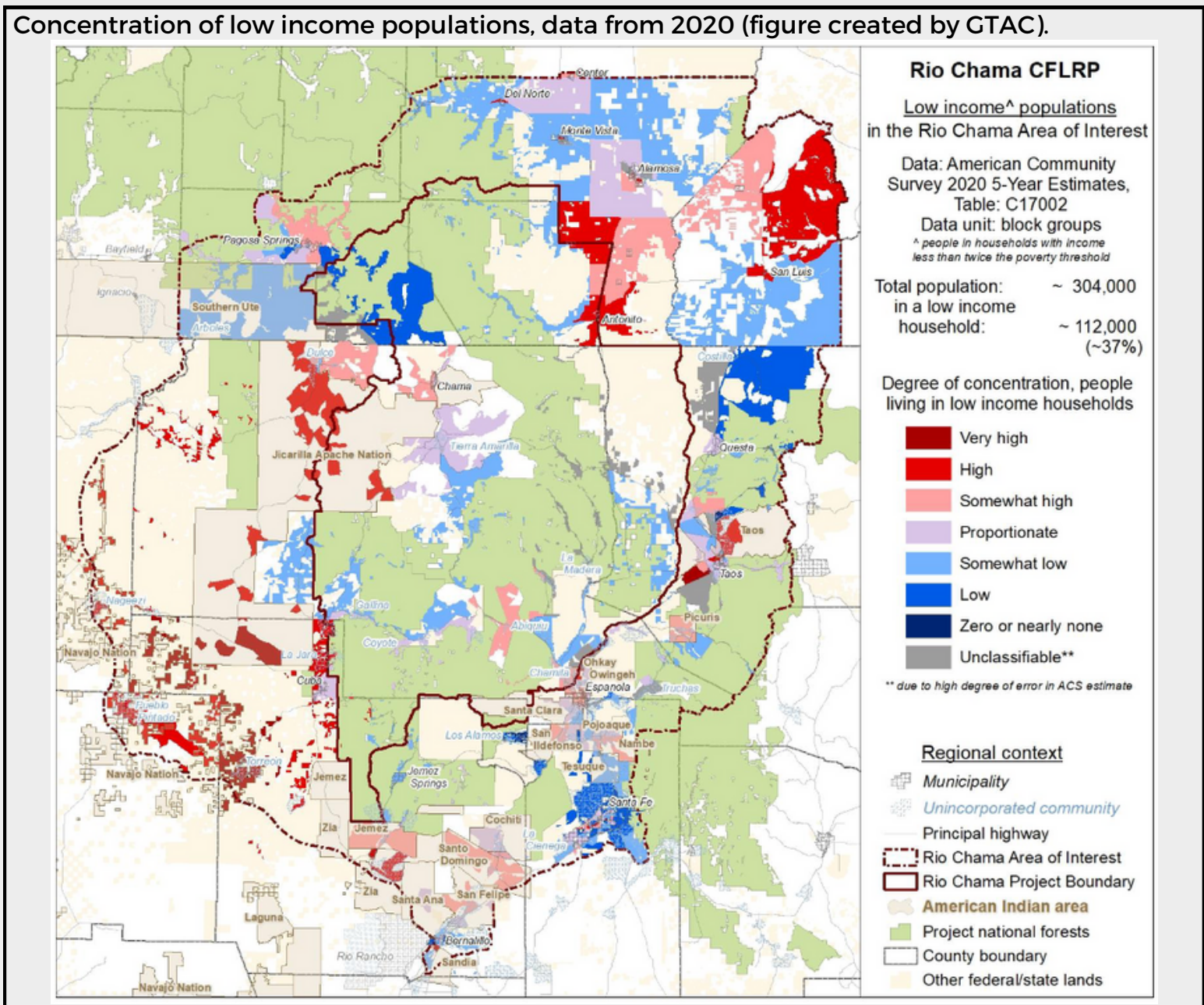


Table summarizes adaptive management (AM) watch-outs as defined in Edition 1 of the 232 Partnership Multiparty Monitoring plan. AM watch-outs were determined by the 232 Partnership at the February 2023 meeting in Taos, NM. Yellow boxes indicate the watch-out was met, or not measured, and should be considered for collaborative discussion.

AM Watch-out	Commentary
Decrease in amount of full and part time jobs. Decrease in the number of employees.	Baseline data only - no comparative data.
Decrease in wages paid.	Baseline data only - no comparative data.
Decrease in proportion of contracts awarded locally. Decrease in number of contracts awarded to HUB businesses through SBA program.	Baseline data only - no comparative data.
Partners report greater outsourcing of work that has historically been completed locally.	76% of CFLN funding was captured locally. No historical data was analyzed.
No trainings offered.	Local trainings offered were recorded through the 2-3-2 quarterly reports. No formal training tracking mechanism is in place.

Monitoring Committee Recommendations and Takeaways

- Scalability -> is there a possibility of microgrants for the restoration economy?
- Who are we missing, who isn't getting the funding?
- GTAC data missing leakage and stipends, bigger leakage pressure with business communities.
- What kind of brain leakage is happening?
- Can we measure interest in a restoration economy?

Rio Chama CFLRP monitoring efforts and collaborative discussions are ongoing. Please direct comments and questions to cody@forestguild.org