



2-3-2
COHESIVE
STRATEGY
PARTNERSHIP

Full Partnership Meeting

Where: Randall Davey Audubon Center, Santa Fe, NM and Zoom

When: Wednesday, May 10th

Time: 8:30 am – 12:00 pm

PAGE & CONTENTS OVERVIEW (Navigate using hyperlinks or PDF Bookmarks)

In attendance	1
Welcome and introductions.....	2
Rio Chama Collaborative Governance Assessment results.....	2
2-3-2 Multiparty Monitoring Plan Implementation.....	5
2-3-2 Partnership updates and processes.....	7
Partner updates and announcements.....	9
Next steps.....	11

In attendance:

1. Dana Guinn, Forest Stewards Guild
2. Eytan Krasilovsky, Forest Stewards Guild
3. Cody Dems, Forest Stewards Guild
4. Gabe Kohler, Forest Stewards Guild
5. Esme Cadiente, Forest Stewards Guild
6. Iris Teague, Forest Stewards Guild
7. Julia Ledford, Mountain Studies Institute
8. Laura Hanna, Mountain Studies Institute
9. Alex Handloff, Mountain Studies Institute
10. Brandy Richardson, SFNF/Rio Chama CFLRP
11. Sandee Dingman, SFNF/Rio Chama CFLRP
12. Steven del Favero, SFNF/Rio Chama CFLRP
13. Steve Romero, SFNF
14. Adam Tlachac, SJNF
15. Andrea Jones, RGNF
16. Michael Tooley, RGNF
17. Angie Krall, CNF
18. Brett Miller, USFS
19. Reuben Montes, USFS
20. Patrick Moore, USFS
21. Bill Trimarco, Wildfire Adapted Partnership
22. Andrew Lenenberger
23. Porfirio Chavarria, City of Santa Fe
24. Clay Benton, Rocky Mountain Ecology Consulting
25. Christi Bode, MoxieCran Media

26. Crystal Medina, New Mexico Forest and Watershed Restoration Institute
27. Marco Lowenstein, North American Wood Products
28. Eric Chavez, US Senator Lujan's office
29. Charles Curtin, Sangre de Cristo Mountain Initiative
30. Claire Catlett, Trout Unlimited
31. Matt Miller, Congresswoman Fernandez's office
32. Michael Martinez, Trees Water and People
33. Alan Hook, City of Santa Fe Water
34. Bob Findling, The Nature Conservancy

Virtual:

35. Tyler Beeton, Colorado Forest Restoration Institute
36. Ch'aska Huayhauca, Colorado Forest Restoration Institute
37. Adam Moore, Colorado State Forest Service
38. Bede Bissonnette, Christ of the Desert Monastery
39. Daniel Denipah, Santa Clara Pueblo
40. Darien Fernandez
41. Garrett Hanks, Trout Unlimited
42. Gordon West, Trollworks
43. Joe Carrillo, New Mexico State Forestry
44. John Ussery, El Rito
45. Zoe Hall, Land Life
46. Rita O'Connell
47. Emma Metcalf, Bureau of Reclamation
48. LaTasha Wauneka, USFS

MEETING NOTES

Welcome and introductions

- Meeting objectives
 - Receive analysis from 2-3-2 Governance Survey and discuss next steps
 - Connect about finalized draft MPM and 2023 implementation
 - Share 2-3-2 Partnership Updates and Processes
 - Share Partner Updates
 - Enjoy the outdoors together
- Collaboration
 - We will use consensus-based decision making to ensure that any decision the group comes to is actively supported, or at least a decision everyone can live with.

Rio Chama Collaborative Governance Assessment Results

- Context
 - The 2-3-2 is the collaborative partner to the Rio Chama Collaborative Forest Landscape Restoration Program (CFLRP).
 - This survey was administered as part of the required monitoring for CFLRP.
 - This survey provides valuable information for the CFLRP and the collaborative group.
 - The Colorado Forest Restoration Institute (CFRI) is administering a similar survey for other CFLRPs as well.
- Background and Context: CFLRP common monitoring strategy

- 2021: the USFS led a collaborative process to develop a national common monitoring strategy.
- Developed a core set of social, ecological and economic indicators that are meant to:
 - Supplement but not replace local multi-party monitoring plans.
 - Provide standardization across projects.
- This survey addresses core monitoring indicator question 12: *How well is CFLRP encouraging an effective and meaningful collaborative approach?*
- CFLR Governance Assessment: approach
 - Online confidential survey
 - The survey took ~20 minutes to complete.
 - Collaborative dynamics – theory and practice of collaboration
 - Collaboration outcomes
 - Recommendations to improve collaborative process
 - Survey distributed to the 2-3-2 partnership in November-December 2022.
 - Received 49 usable responses (24% of contact list).
 - This is a good number!
 - Results inform:
 - Program-wide evaluation
 - Project-level progress and performance
 - Confidential, longitudinal and standardized
 - Goal: understand what is working well, what needs improvement, and how to maintain collaborative progress and performance through time.
- What's working well
 - Principled engagement
 - Strong majority of respondents:
 - Shared understanding of the problems that impact our landscape.
 - Shared understanding of what to do about it.
 - Shared agreement on purpose and intent of the Rio Chama CFLRP.
 - Shared motivation
 - High degree of social capital – the “glue” that holds groups together.
 - Survey respondents noted that:
 - The process has built trust, relationships and respect.
 - They have trust in the ability to achieve desired outcomes.
 - Knowledge, learning and adaptive management
 - Social learning occurs through repeated interactions among participants.
 - Can reduce conflict, increase understanding, action and trust.
 - 4 criteria:
 - Participants work together to co-develop knowledge.
 - Knowledge and information is accessible to all members.
 - Commitment to adaptive management.
 - Flexibility to adaptively manage resources and actions.
- Current challenges impacting progress and performance
 - Limited industrial capacity
 - Wildfires that take attention, resources, and options away from the group
 - Turnover, vacancies/acting positions
 - Timing and amount of funding
- Recommendations to improve the collaborative process and performance

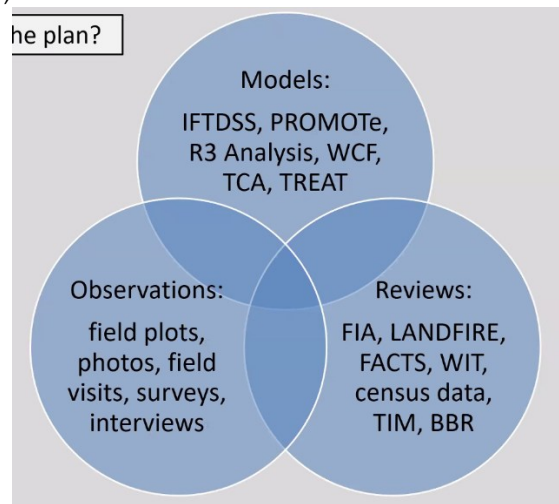
- Stakeholder participation, engagement and outreach
 - Increase engagement with:
 - Tribes, Land Grants, Hispanic forestry and ranching communities, private landowners
 - Biomass and biofuel sectors
 - Local champions as connectors to other groups, sectors
 - Formal communication plan and tribal engagement strategy
 - *“More consistent communication and use of various communication forums and tools is also a need. A clear communication plan is under development and very much needed, as is an engagement strategy for Tribal and underserved communities in our landscape.”*
- Resource capacity
 - Increased funds and personnel capacity
 - Funding opportunities for travel to Partnership meetings and field trips
 - Funding to support volunteers
 - Increased funds to support implementation
 - *“the 5 most important projects aren’t necessarily completed each year; instead it’s still the #1 or 2 projects in each of the sub-geographies that get done based on available funding.”*
- Roles, protocols, and accountability
 - Aligning expectations for collaborative engagement and involvement
 - Two-way flow of accountability
 - More “co-working” space
 - Discuss decision-space sideboards and best practices for collaboration between Agency and broader partnership
 - *“[We need] mechanisms to document accountability to the collaborative process from the Forest Service to the collaborative. The accountability seems to only flow in the direction of from the collaborative and NGOs to the Forest Service.”*
- Cross-boundary planning and prioritization across the 2-3-2 landscape
 - *“There needs to be more broad scale planning that spans boundaries. Almost all planning thus far has been on individual units. [It’s] hard to see where there are common, highly specific goals across the landscape. [I] don’t see where there has been much prioritization across the landscape.”*
- Next steps and deliverables
 - Short-term: for collaborative discussion and annual reporting
 - Presentation slide deck
 - Larger technical report
 - 1-3 page brief on survey findings and discussion today
 - Longer-term
 - Peer-learning sessions with new CFLRP cohort
 - CFRI is happy to engage in follow-up conversations and/or provide support if/when needed!
 - Iterative process: needs, capacities will change, periodically take stock and reassess in 2026
- Discussion
 - This information is a huge asset for the Partnership.

- It's helpful to know which areas the collaborative can grow in as we transition into the life of the CFLRP.
 - It will be interesting to see if the levels of consensus change as new groups are engaged through the life of the CFLRP.
- In regard to staffing and turnover, the USFS has almost filled all permanent positions for the Rio Chama CFLRP.
 - While turnover won't stop, this will provide some consistency and stabilization in Rio Chama CFLR staff.
 - Collaborative partners appreciate the level of communication and preparation for transition of detailers within the USFS, even though it is challenging overall.
 - Long-term strategic agreements are being put in place.
 - The next phase is increasing the pace and scale of restoration and keeping the pipeline of money flowing to meet the needs of the landscape.
- Which of these recommendations are actionable? Which are feasible and desirable?
 - There is an opportunity to do more green fuelwood projects that meet the need of local communities.
 - Supports economic development at the kitchen table level.
 - We (the 2-3-2) don't want to get down to the kitchen table level if we can't follow through, which is why we need the place-based collaboratives to help build and maintain these relationships.
 - Wildfire Adapted Partnership's (WAP's) approach to community wildfire protection could be adapted in northern New Mexico.
 - USFS is translating communications materials to Spanish.
 - The 2-3-2/Rio Chama could give regular briefings and status updates to Tribes.
 - Reuben Montes can establish connections and agreements with Tribes to open those lines of communication.
- There isn't a strong correlation between groups and their answers.
 - The results could be stratified by group if the Partnership is interested.
 - No statistical analysis will be done for these survey results, so be aware that these are descriptive results.
- What changes might you make in light of these results and how might you go about implementing them?
- Where might you need help implementing these recommendations?
- Is there a strong stratification between some groups and their answers?
 - No not really
 - Could stratify these results by group if it is the Partnership is interested
 - No statistical analysis, be aware that these are descriptive results

2-3-2 Multiparty Monitoring Plan Implementation

- Why are we monitoring?
 - Required as part of the CFLRP funding.
 - Conversations about monitoring treatments across the landscape have been in the works since the beginning of the 2-3-2, and this monitoring plan serves the whole Partnership and the CFLRP.
 - This monitoring plan includes the Washington Office monitoring indicators and questions that were generated by the 2-3-2.

- The 2-3-2 Multiparty Monitoring Plan is live on the [website](#).
- What's the plan?
 - 23 questions:
 - Ecological monitoring
 - Fire regimes (2)
 - Forest characteristics (4)
 - Wildlife (2)
 - Water (1)
 - Socioeconomic monitoring
 - Economic sustainability (8)
 - Forest co-management (3)
 - Collaboration (3)
 - Models, reviews and observations



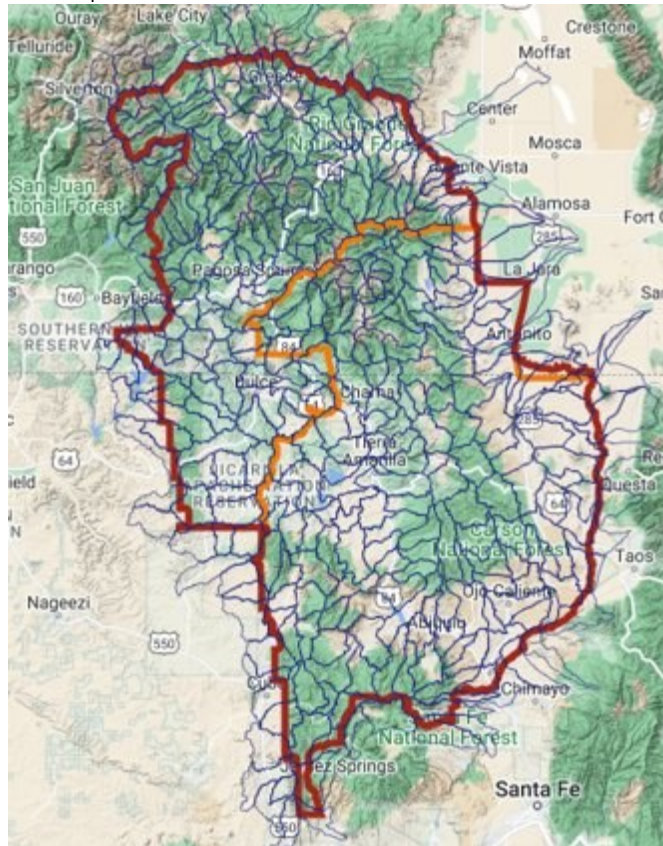
- Several field crews are supporting monitoring in the Rio Chama/2-3-2 landscape this summer:
 - Mountain Studies Institute, Durango
 - Forest Stewards Guild, Taos and Santa Fe
 - Other support from Adams State Intern with Colorado State Forest Service (CSFS)
 - Gabe Kohler, from the Forest Stewards Guild, is working with this intern to collect socioeconomic data.
 - They will also help conduct a series of surveys with wood processors and contractors.
 - The 2-3-2 will provide updates about where crews are working through the bi-monthly newsletter and other communications.
- Forest Inventory Analysis (FIA)
 - FIA has a grid across all forested lands in the US, where they have long-term monitoring.
 - FIA is developing an intensified grid to cover the Rio Chama landscape which will provide some baseline data and capture stochastic changes across the landscape.
 - 2-3-2/Rio Chama plots will be clustered around FIA sites that overlap with Rio Chama treatment areas.
 - This grid system allows us to measure treatments of different types across various forest types and multiple land ownerships.

- Grid across all forested lands in the US
- Plot protocols
 - There are ongoing conversations with the Monitoring Committee of the 2-3-2 to finalize the plot protocols.
 - The first plots were monitored on the Tres Piedras Ranger District of the Carson National Forest.
- In addition to on the ground plots, drone photography will provide visual representations of conditions in riparian and forested areas.
- There are multiple riparian treatments planned and underway within the Rio Chama landscape.
 - Installing temperature sensors and collecting eDNA samples in these areas.
- Multiple riparian treatments planned and underway within the Rio Chama
 - Working to install temperature sensors, collect eDNA samples.
- Discussion
 - Going forward, 2-3-2 staff should build in bite-sized chunks of information about monitoring in quarterly meetings, rather than having an information dump once/year.
 - The monitoring plan doesn't mention monitoring requirements set forth in the Wild and Scenic Rivers Act.
 - The Rio Chama is designated as a Wild and Scenic River.
 - The monitoring questions are meant to apply to the whole landscape and may not be comprehensive of all monitoring requirements across the landscape.
 - However, there is room in the plan to incorporate other monitoring approaches that can supplement ongoing efforts.
 - Christ of the Desert Monastery is currently involved with the Bureau of Reclamation (BOR) in a sediment monitoring effort and is also working with New Mexico Wild to do invertebrate surveys.
 - Christ of the Desert is applying for a grant with the BOR that would dramatically increase river monitoring resources for the Monastery.
 - The moving target of timber sales will make it difficult to figure out the timing of monitoring, especially for pre-treatment monitoring.

2-3-2 Partnership Updates and Processes

- All lands Focal Watershed development
 - Context
 - Sandee Dingman presented the USFS focal watersheds in the Rio Chama landscape at the February 2-3-2 meeting in Taos.
 - The USFS is using **focal watersheds**, rather than **priority watersheds**, because there are only three **priority** watersheds in the CFLRP landscape.
 - **Priority** watersheds are identified by the Watershed Condition Framework.
 - The USFS had already identified some watersheds where work is needed and ongoing, so Sandee worked to consolidate those priorities into a list of **focal watersheds**.

- This has led to new conversations led by Dana Guinn and Gabe Kohler about the identification of focal watersheds for all lands in the 2-3-2/Rio Chama landscape.
 - All lands focal watershed identification
 - The identification of all lands focal watersheds will allow us to leverage expertise and resources across the landscape.
 - Gabe and Dana are leading the effort to collect information from partners, specifically about which HUC-12 watersheds are important to folks in this landscape and why, to whatever extent they are interested in sharing.
 - The Socioeconomic Working Group has also been part of this discussion and is helping start conversations with Tribal and Land Grant communities.
 - Hopefully this will be a good conversation starter to engage with communities that aren't at the table right now.
 - The tool
 - 2-3-2 staff has developed an online map that displays all HUC-12s in the landscape.



- The user will open a survey (linked on the map) that asks them to indicate their priority watersheds (using the map) with the option to describe the value of the watershed.
 - This tool will be used to facilitate some of these conversations, but they don't all have to happen online.
 - For example, maps could be printed out so folks can have a conversation around the table.
 - The next step is to develop an outreach strategy.

- Discussion
 - Look at grazing allotments in watersheds.
 - This effort isn't only tied to the CFLRP, it intentionally includes the whole 2-3-2.
 - Expectation management and clear communication will be very important.
 - This is a finer scale than the Forest Action Plans.
 - Local volunteer fire departments are full of community leaders and will be helpful for outreach.
- 2-3-2 Partnership and Rio Chama CFLRP communications
 - Brandy Richardson has been detailed as the Public Affairs Officer for the Rio Chama CFLRP. Alex Handloff is responsible for communications from the 2-3-2.
 - Brandy's detail ends at the end of May.
 - Initially, Alex (2-3-2) and Brandy (USFS) talked about having a joint communications plan for the Rio Chama CFLRP but decided to keep them separate.
 - The 2-3-2 should have a communications plan that serves the whole Partnership, not just the Rio Chama.
 - USFS processes are cumbersome.
 - Products to date:
 - [Rio Chama](#) page on the 2-3-2 website
 - Bi-monthly 2-3-2 newsletter that includes a section for Rio Chama
 - Developing a Facebook page
 - Updates in USFS newsletters
 - 5 radio shows
 - Documents translated into Spanish
 - Alex, on communication
 - We are communicating all the time!
 - It's important to be intentional, thoughtful and authentic.
 - There are 5 million acres of stories to tell!
 - We are thinking creatively about how to do this communication.
 - Where are we now?
 - The 2-3-2 Communications Plan is nearly complete.
 - The Plan will be adaptive.
 - We have assembled a list of key messages, goals and objectives.
 - Tracking stories
 - Where are we going?
 - Develop more engaging opportunities for communication.
 - Podcast?
 - Amplify what we are doing by tapping into existing audiences.
 - Why are we doing this?
 - It's all about people talking to people.
 - What we need your help with:
 - Photos (include information about who is in the photo, who took the photo, what's in the photo and where it was taken)

Partner updates and announcements

- Plumtaw Fire Film
 - Premiering in Pagosa Springs on May 17th

- An invisible success: a potentially devastating wildfire that was mitigated by luck and previous management.
 - Area identified as a priority by the San Juan Headwaters Forest Health Partnership.
 - Fuels treatments previously completed along a POD boundary.
- Messaging dovetails with the Midnight Fire film.
- The Plumtaw film will be available online after the premiere and shared with the Partnership.
- Sangre de Cristo Mountain Initiative
 - Learning that it's very difficult to move burned timber before it is no longer merchantable.
- Wildfire Adapted Partnership (WAP)
 - WAP does work on private lands in partnership with the Chama Peak Land Alliance (CPLA) and the Natural Resource Conservation Service (NRCS).
 - Conducts free site assessments for property owners and has a chipper rental rebate program.
 - Received a Community Wildfire Defense Grant (CWDG) through the USFS.
 - This was the only CWDG awarded in Colorado!
 - The CWDG will allow WAP to do more cost-share projects, continue their chipper rebate program, increase education and outreach, and do more outreach through their neighborhood ambassador program.
 - Haven't seen the paperwork but expect it to come through this summer.
 - This will provide 5 years of funding for WAP.
- USFS
 - Reforestation dollars to stand up a pilot test for seed tree inventory.
 - Working with the Santa Fe Indian School/RMYC.
 - Lots of interest from the Washington Office and Regional Office.
 - Bipartisan Infrastructure Law (BIL) dollars and other stimulus is reaching the ground!
 - Sandee is trying to put together big agreements that will allow us to capture those dollars and spend them out over many years to build capacity to accomplish work at the community level.
 - Rio Grande National Forest
 - Currently still have 104% of average snowpack in the South San Juan Mountains.
 - Looking for a spring burn window to complete the Bighorn State Line prescribed burn, which the Partnership got to visit last November.
 - Carson National Forest
 - Trying to find a burn window to reinvigorate the prescribed fire program on the Forest.
 - Thanks to the Guild for attending community meetings and adding capacity with the All Hands All Lands Burn Team.
 - Master challenge cost-share agreement with River Source to do watershed restoration.
- Forest Stewards Guild
 - Hiring to fill Youth Corps positions
 - Includes chainsaw training and basic firefighter training.
 - 15 positions
 - Some housing is available

Next steps

- Next meeting: Wednesday, August 9 in Chama
- If you have things to share in the newsletter, [contact Alex Handloff](#).