



2-3-2 COHESIVE STRATEGY PARTNERSHIP

Two Watersheds - Three Rivers - Two States

BACKGROUND

Land managers, private landowners, and NGOs in both Colorado and New Mexico came together in 2016 to develop a cohesive, multi-faceted strategy to address forest health concerns and protect and enhance water quality in the region. The ensuing collaborative was named the Two Watersheds – Three Rivers – Two States Cohesive Strategy Partnership, better known as “the 2-3-2.” The 2-3-2 brings together a diverse “team of teams” comprised of many diverse individuals and groups including the Chama Peak Land Alliance, Wildfire Adapted Partnership, San Juan Headwaters Forest Health Partnership, San Juan-Chama Watershed Partnership, the All Hands All Lands burn program of the Forest Stewards Guild, and the Rio Grande Water Fund.

VISION

Working collaboratively across public and private lands, agencies, and organizations, the 2-3-2 Partnership will coordinate efforts to promote resilient landscapes that protect and improve water resources for communities and habitat for wildlife within and downstream of the 2-3-2 boundary.

MISSION

By regularly convening diverse partners, promoting coordinated and holistic planning, and elevating local efforts, the 2-3-2 Partnership aims to facilitate cooperation and information-sharing between organizations working toward landscape conservation with an emphasis on watershed resilience in southern Colorado and northern New Mexico. Partners of the 2-3-2 are committed to integrated management strategies that include wildlife, aquatic health, and communities alongside forest health and water quantity deliverables

OBJECTIVES

**IMPROVE FOREST
HEALTH AND WATER
RESOURCE RESILIENCE**

**SUPPORT BIOMASS AND
MARKETS**

**ELEVATE EXISTING
EFFORTS AND DEVELOP
UNIFIED MESSAGING**

**DEVELOP A HOLISTIC,
SCIENCE-BASED
APPROACH**



2-3-2 COHESIVE STRATEGY PARTNERSHIP

Two Watersheds - Three Rivers - Two States

ACCOMPLISHMENTS

Partners working together with the 2-3-2 have:

- Coordinated between CO and NM forest action plans
- Developed a 3-year action plan
- Treated 20,000 acres with prescribed fire
- Delineated geography and informed priorities of a CFLRP
- Created processes for coordinating planning efforts within and across boundaries
- Created processes for increasing the sharing of resources within and across agencies, interest groups, and land owners
- Partnered to complete the first ever TREX (Prescribed Fire Training Exchange) in Region II
- Supported defensible space work for low-income housing through CAFA programming
- Initiated mapping of collaborative management efforts

- Developed a map that shows sources of smoke
- Increased application of prescribed fire on the Carson and San Juan National Forests
- Applied Regional Conservation Partnership Program funds
- Increased market opportunities between forest product supply and the Blanca Mill in South Central CO
- Advanced conversations about consistency in haul weights between CO and NM
- Expanded conversations about biomass market opportunities
- Developed a Firewise program in Rio Arriba County, NM
- Generated community discussion around fire planning tools
- Drawn national attention for collaborative, landscape scale partnerships



2-3-2 COHESIVE STRATEGY PARTNERSHIP

Two Watersheds - Three Rivers - Two States

PARTNERS

Bureau of Land Management
-Colorado State Office
-New Mexico State Office

Chama Peak Land Alliance

Colorado Department of Fire Prevention and Control

Colorado Forest Restoration Institute

Colorado Parks and Wildlife

Colorado State Forest Service

Forest Stewards Guild

Mountain Studies Institute

Natural Resources Conservation Service
-Colorado
-New Mexico

New Mexico Forest and Watershed Restoration Institute

New Mexico State Forestry Division

Rio Grande Water Fund

Rio Grande Watershed Emergency Action Coordination Team

San Juan-Chama Watershed Partnership

San Juan Headwaters Forest Health Partnership

Soil & Water Conservation Districts
-Colorado
-New Mexico

The Nature Conservancy, NM & CO

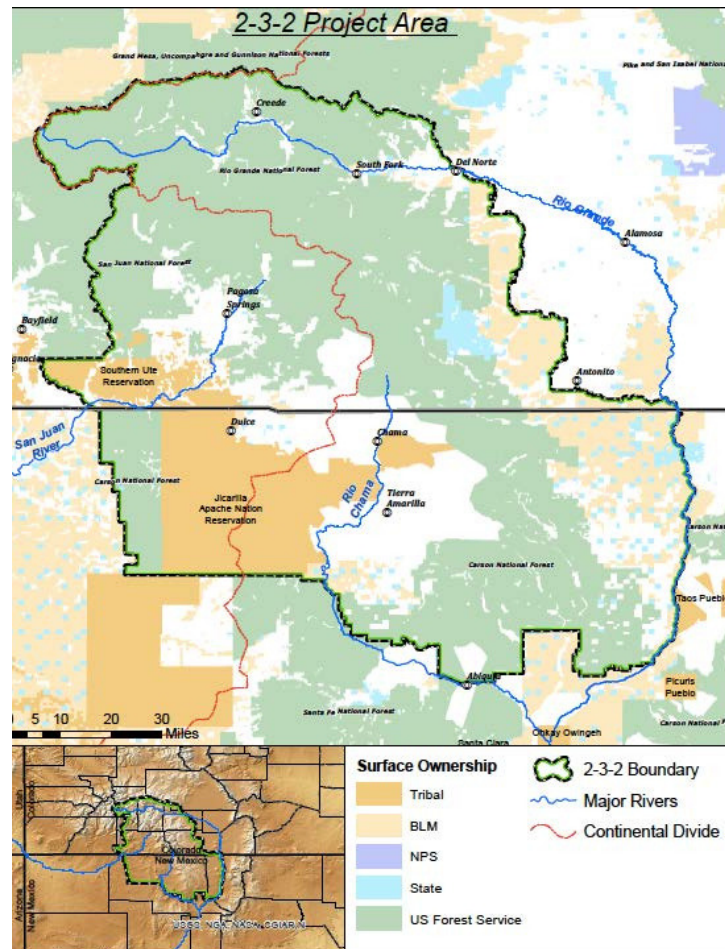
Trout Unlimited

US Forest Service
-Carson National Forest
-Rio Grande National Forest
-San Juan National Forest
-Sante Fe National Forest

Wildfire Adapted Partnership



The 2-3-2 Membership is made up of organizations and individuals from across the geography who represent diverse agencies, ownership types, interests, and backgrounds. We come together to learn, share, and restore the places we all care about.



And,
you?



2-3-2 COHESIVE STRATEGY PARTNERSHIP

Two Watersheds - Three Rivers - Two States



COMMITTEES



Executive

Biomass & Markets

Education & Outreach

**Fire Management,
Capacity & Efficiency**

**Technology, Research
& Monitoring**

**Wildlife, Water &
Habitat**



Join US!

**Do you have expertise to add or
interest in these committees?
We'd love to hear from you. Email
our team at
info@232partnership.org**